

# Rittal – The System.

Faster – better – everywhere.



## DK 7140.535

# Cable entry panel with brush strip

State: 9/22/2023 (Source: [rittal.com/us-en](http://rittal.com/us-en))

ENCLOSURES

POWER DISTRIBUTION

CLIMATE CONTROL

IT INFRASTRUCTURE

SOFTWARE & SERVICES

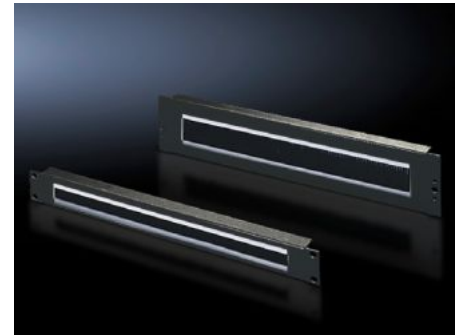
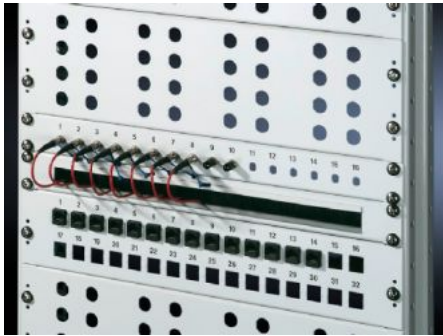
FRIEDHELM LOH GROUP



# DK 7140.535 - Cable entry panel with brush strip

## 482.6 mm (19")

With 390 x 40 mm (2 U) or 390 x 20 mm (1 U) cut-out with brush insert, option of accommodating cable clamp straps.



## Features

Model No.	DK 7140.535
Product description	For convenient, simple cable routing between two areas separated by an imperial mounting level, e.g. between the front and rear areas of the 19" mounting level.
Applications	For locking and simultaneous cable routing in installation zones to the 1 U, 482.6 mm (19") mounting standard
Material	Carbon steel Brush strip: Plastic, UL 94-HB
Surface finish	Spray-finished
Color	RAL 7035
Mounting cut-out	Width:390 mm Height:20 mm Width:15.4 " Height:0.79 "
Dimensions	Width: 482.6 mm Width: 19 "
Height units	1 U
Packaging unit	1 pc(s).

# Features

---

Weight/packaging unit	0.486 kg 1.1 lb.
Customs tariff number	94039910
EAN	4028177166608
ETIM 7.0	EC000322
ECLASS 8.0	27400604

# Approvals

---

Approvals	GOST
-----------	------